



delivering
trusted
products

IFS Pest Control Guideline

Guidelines for implementing
pest control requirements in
IFS Food, Version 6 chapter 4.13



ENGLISH

ACKNOWLEDGEMENTS

IFS would like to thank all participants who have contributed in developing these IFS pest control guidelines. Thanks also go to the members of the IFS working group and the corresponding sub-working groups who were involved in developing this document.

IFS would like to thank the following people for their technical assistance in developing this document:

Karen Baethke	EDEKA Handelsgesellschaft Rhein-Ruhr mbH
Andreas Beckmann	DSV - Deutscher Schädlingbekämpfer Verband e. V.
Guido Frölich	W-E-G Stiftung und Co. KG
Kai Göhmann	IPMpro GmbH
Bärbel Holl	Holl & Stockhausen GmbH Verein zur Förderung ökologischer Schädlingbekämpfung e. V.
Armin Juncker	Verband Deutscher Großbäckereien e.V.
Dr. Gerhard Karg	IPMpro GmbH
Dr. Kerstin Kunz	real,- SB-Warenhaus GmbH
Joachim Mehnert	DQS CFS GmbH
Florian-Fritz Preuß	Quant Qualitätssicherung GmbH
Matthias Schielmann	Harry Brot GmbH
Ulrike Völzke	Lieken Brot- und Backwaren GmbH
Timo Weitzel	W-E-G Stiftung und Co. KG

IFS would also like to thank the Verband Deutscher Großbäckereien (Association of German Industrial Bakeries) for making their premises available for working group meetings.

Printed by membership fees of Deutscher Schädlingbekämpferverband e. V. (German Pest Control Association) and the Verein zur Förderung ökologischer Schädlingbekämpfung e. V. (Association for the promotion of ecological pest control e. V.).

TABLE OF CONTENTS

1	Introduction	2
2	General Introduction	4
3	Recommended approach for implementing the IFS requirements for pest monitoring / pest control	7
4	Legal and normative requirements for pest monitoring / pest control	11
5	Requirements of IFS Food Version 6 for pest monitoring and pest control – explanation and interpretation	14
6	Further requirements of IFS Food Version 6 for pest monitoring / control – explanation and interpretation	22
	6.1 Further requirements of IFS Food Version 6 for pest monitoring and pest control, besides chapter 4.13, with direct and explicit reference to the topic of pests, prevention and control	23
7	Hazard analysis and risk assessment	25
8	Prevention	28
	8.1 General hygiene	29
	8.2 Organisational measures	30
	8.3 Structural proofing of the premises	30
9	Training and qualification requirements	32
10	Contract management (pursuant to 4.13.2)	34
11	Service provider assessment	37
12	Pest control in other IFS Standards	37
13	Annex	38
	Risk-oriented pest monitoring system:	39
	Glossary	40
	Sources	42



1 Introduction

Guidelines for implementing the IFS Food requirements for „pest control“

Area of application / scope of the guidelines

This version of the IFS guidelines for pest control includes an interpretation of the requirements, along with a general introduction into the topic of pest control and further topics designed to support users in the implementation of the pest control requirements.

These guidelines are based on the requirements of IFS Food, Version 6, for pest control and include an interpretation of these requirements without imposing any new ones.

In addition, they are designed to improve the understanding of the IFS Food requirements in both upstream and downstream sectors (suppliers, service providers, food retailers ...) and to clarify responsibilities in different areas.

To improve the acceptance of the guidelines in different areas, the guidelines working group is composed of the relevant stakeholders.

The guidelines were drawn up so as to ensure they can be used both in Germany and abroad.

2 General Introduction

The topic of pest control is of great importance for food businesses. This is why a whole chapter has been dedicated to it in IFS Food, since it is both directly and indirectly linked to the topics of hygiene and food safety. The IFS requirements describe neither the specific legal requirements nor the technical implementation of pest control measures. With this in mind the working group has also updated the contents of the guidelines.

The focus is on the interpretation and implementation of the IFS requirements; no legal requirements or technical details in connection with pest control are explicitly addressed or set out, but reference to them is made. Another key point is how to deal with the service provision in general and with the communication between client and contractor.

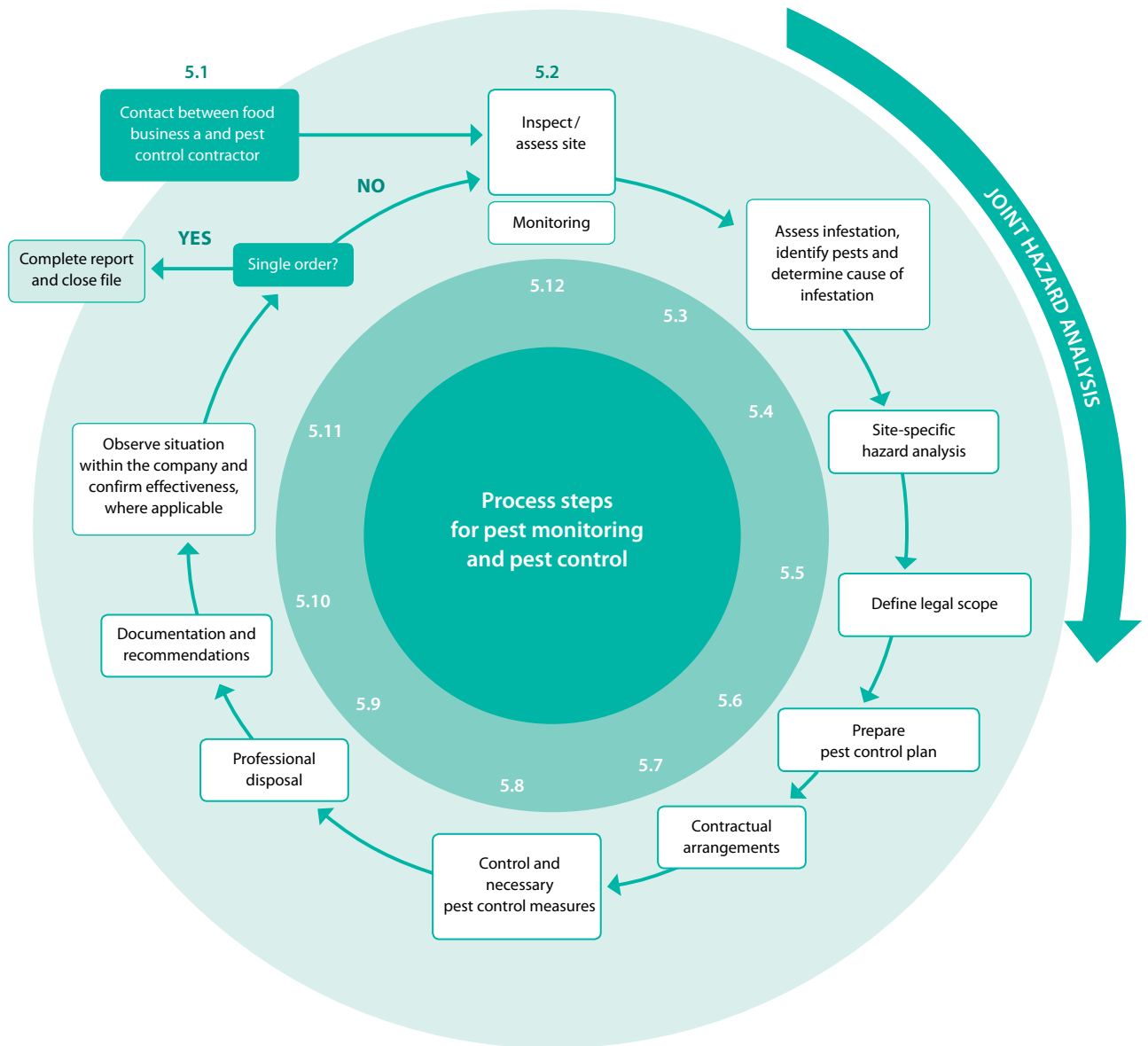
The core requirement of IFS for the topic of pest control in food businesses therefore remains the same: a risk-based system for pest control is established to prevent any negative impact of pests on food and to ensure that the implementation of pest control measures continues to pose no risks to any products in the food business.

To approach the topic in a way that is both systematic and technically sound, wherever possible, reference was made to existing rules and DIN standards (DIN = German Institute for Standardization) relevant to the industry, which also provide assistance.

To explain and illustrate how professional pest control services should be implemented, the flow chart of DIN EN 16636 was used, with minor adaptations made by the working group. The flow chart can also be used as a professional approach to service provision as part of the implementation of the IFS requirements.

The adapted chart based on DIN EN 16636 is shown below. Further guidance on this is also provided by table 1 in chapter 3. Table 1 reflects the numbering used in the chart.

Figure 1:
Flow chart for a professional approach to pest control
 adapted version of DIN EN 16636:2015



Source: Adapted flow chart based on DIN EN 16636:2015

3 Recommended approach for implementing the IFS requirements for pest monitoring / pest control

Table 1, shown below, describes a recommended approach for implementing the IFS requirements for pest control and pest monitoring. This structured approach facilitates the implementation of the IFS requirements.

Table 1:
Recommended approach

Recommendations	References: IFS Standard Food Version 6, IFS pest control guidelines as well as requirements based on other laws and standards
<p>1. In-house or sub-contracted</p> <ul style="list-style-type: none"> Decide whether the pest monitoring and control measures will be implemented by in-house staff or with the help of an external service provider 	<ul style="list-style-type: none"> IFS 6 chapter 4.13 pest monitoring and pest control, clause 4.13.2 Guidelines chapter 9 qualification
<p>2. Inspect / assess site / record customer requirements</p> <ul style="list-style-type: none"> Assess infestation, identify pests and determine cause of infestation Record and agree customer requirements 	<ul style="list-style-type: none"> IFS 6 4.13.1 Guidelines chapter 5 interpretation DIN EN 16636 items 5.2 and 5.3
<p>3. Site-specific hazard analysis</p> <ul style="list-style-type: none"> Carry out a site-specific hazard analysis, including a risk assessment for pest control and pest monitoring, to identify any hazards and risk potential 	<ul style="list-style-type: none"> IFS 6 4.13.1 Guidelines chapter 7 hazard analysis DIN 16636 item 5.4
<p>4. Measures and definition</p> <ul style="list-style-type: none"> Define and / or implement the required measures for pest monitoring and pest control Draw up contractual arrangements 	<ul style="list-style-type: none"> IFS 6 4.13.1, 4.13.4, 4.13.5 Guidelines chapter 10 contract management DIN EN 16636 items 5.6, 5.7 and 5.8

<p>5. Implementation and documentation</p> <ul style="list-style-type: none"> • Monitor and implement the required pest control measures. Document measures and their implementation accordingly • Prepare trend analyses (also for continuous improvement process) 	<ul style="list-style-type: none"> • IFS 6 4.13.3, 4.13.6 • Guidelines chapter 5 interpretation • DIN EN 16636 items 5.6, 5.7 and 5.8
<p>6. Regular monitoring</p> <ul style="list-style-type: none"> • Monitor implementation of measures • Monitor efficiency of measures • Monitor changes in production processes and / or procedures as well as storage • Check if additional customer requirements and industry standards must be taken into account • Service provider assessment • Internal audits, site inspections and QM review (including monitoring of trend analyses) 	<ul style="list-style-type: none"> • IFS 6 1.4, 2.2.3.10, 5.1, 5.2, 4.13.6 • Guidelines chapter 5 interpretation and chapter 11 service provider assessment • DIN EN 16636 items 5.1, 5.2, 5.11, 5.12

Note on 1:
In-house or sub-contracted


Food businesses usually employ a pest control contractor to implement measures for pest monitoring and control, including preparation of the related documentation. In some cases such measures are implemented by in-house staff; here, it must be ensured that the in-house staff have the necessary qualifications.

Note on 2:
Inspect / assess site / record customer requirements

An inspection and / or assessment of the site is necessary before an individual hazard analysis can be carried out and / or measures for pest monitoring or pest control are implemented. For this purpose, the client's requirements should be requested, where applicable.

Notes on 3:
Site-specific hazard analysis

Carry out a site-specific hazard analysis. It is important that the comprehensive hazard analysis of the IFS business adequately takes into consideration the hazard analysis conducted by the pest control technician. In this context, the notes in chapter 7 hazard analysis of the guidelines must be observed.



Notes on 4:
Measures and definition

The results of the hazard analysis must be used to define the measures for pest monitoring and/or control. The services must be specified in a contract. In addition, it is important to note what measures (e.g. structural) must be implemented by the IFS business.

Notes on 5:
Implementation and documentation

All measures must be implemented on the basis of the agreed rules. This also applies to the documentation. The trend analyses show the effectiveness of the measures and must be viewed as part of the continuous improvement process.

Notes on 6:
Regular monitoring

One objective of carrying out regular reviews is to check whether all requirements have been implemented and whether they are efficient and sustainable. Another objective is to check whether the production processes and/or procedures have changed and/or any changes have been made to the storage arrangements, as this can lead to changes in pest monitoring and/or pest control. The service provider assessment is also carried out in this context. An overall review and assessment on the topic of pest control is carried out as part of the annual QM review.

4 Legal and normative requirements for pest monitoring / pest control

When fulfilling the IFS requirements for pest control, all relevant statutory requirements must be adhered to as a matter of principle.

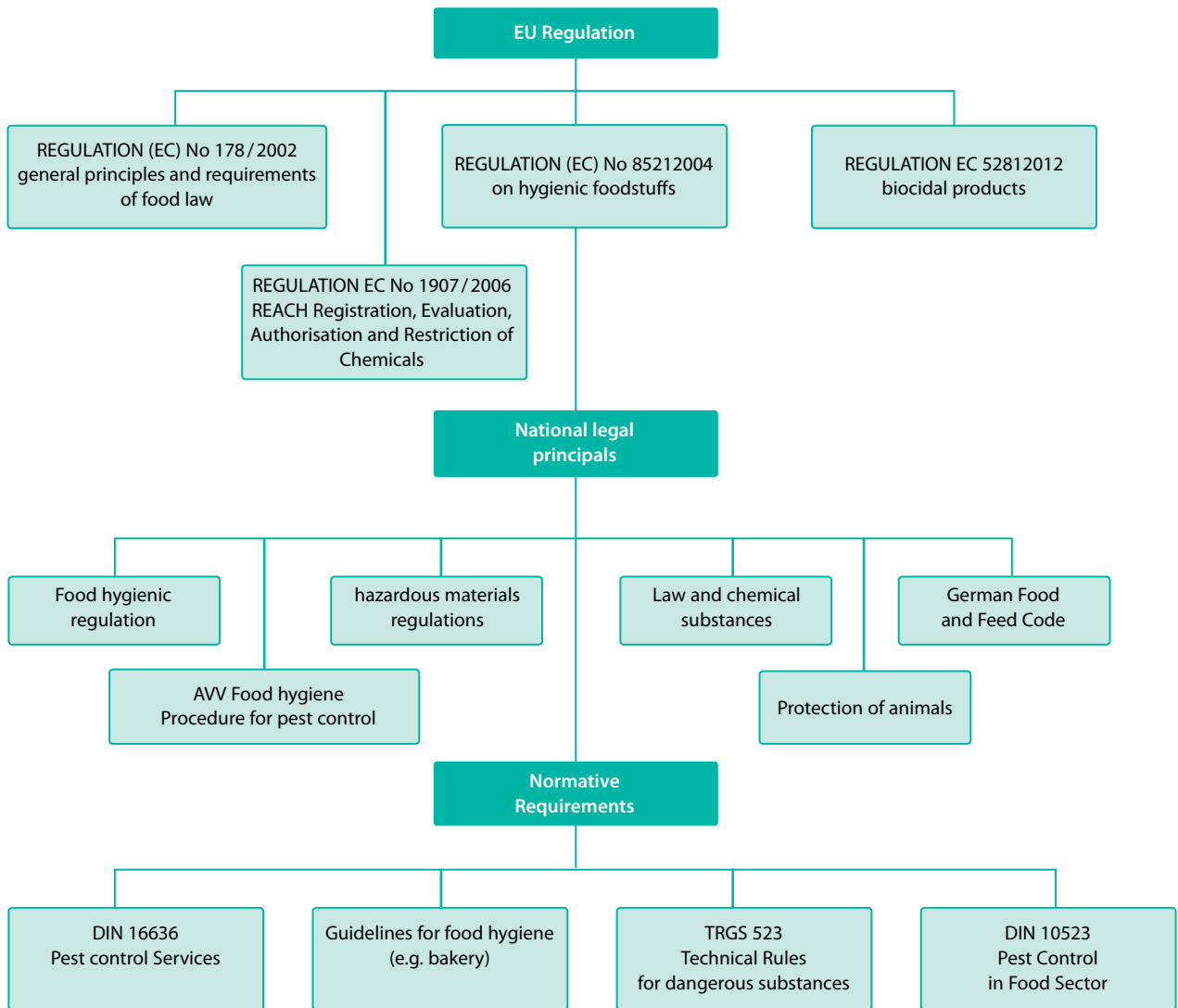
The relevant laws can be found in EU legislation as well as in the national rules of the Member States. This is highlighted again in the provisions of 4.13.1. The provisions of 4.13.1 require a food business operator to have in place a pest control system which complies with local legal requirements.

As EU regulations automatically apply in every Member State, they are also reflected in the wording of these provisions.

Normative requirements such as DIN EN 16636 should also be considered here due to their quasi-legal nature, as they assist users in fulfilling the statutory requirements.

The following chart provides a rough overview of the legal situation regarding pest control and applicable assessment criteria for this topic in Germany.

Figure 2:
Legal bases for pest control in Germany



Source: own chart

5 Requirements of IFS Food Version 6 for pest monitoring and pest control – explanation and interpretation

The requirements of IFS Food Version 6 chapter 4.13 are listed, explained and interpreted in the following section. Chapter 4.13 deals directly with this topic and imposes specific requirements on pest control.

Further requirements, some of which are indirectly concerned with this topic or mention the term 'pest control', are listed again in chapter 6 of these guidelines.

4.13 Pest monitoring / pest control

Interpretation

Both terms are explained in the glossary of these guidelines.

4.13.1 The company shall have a pest control system in place which is in compliance with local legal requirements, taking into account, as a minimum.

- the factory environment (potential pests),
- site plan with areas for application (bait map),
- identification of the baits on site,
- responsibilities, in-house / external,
- used products / agents and their instructions for use and safety
- the frequency of inspections

The pest control system shall be based on hazard analysis and assessment of associated risks.

Interpretation

This requirement of IFS Food Version 6 stipulates that the company must implement a pest control system that takes into account local requirements. This includes not only the requirements of the Standard but also of EU legislation and/or the legislation of individual Member States. An overview of the relevant legislation and standards can be found in chapter 4 of these guidelines.

First bullet point

• factory environment (potential pests)

Interpretation

The factory environment also refers to the following:

Firstly, the different products manufactured / produced and / or stored there; for example:

- whether these products are at particular risk of potential pests,
- open products and / or the manufacture of products is highly sensitive to contamination.

Secondly, the immediate surroundings of the site must also be considered in view of a potential infestation (e.g. rural location, open water etc.).

In detail this means it has to be assessed what kind of pest could occur, do not only think of the common pests like mice, rats, cockroach and flies, but also be aware of possible infestation by beetles in many different varieties, other flying insects or birds also.

These points are covered in the hazard analysis.

Second bullet point:

• site plan with areas for application (bait map)

Interpretation

The food business operator must ensure that all baits (see glossary for definition) used on site and in the factory environment that falls within its responsibility are documented in terms of target organism, location and position and / or site. In the case of an acute measure lasting no longer than 35 days, it is sufficient to document the number of baits and traps for a limited, closed space.

This makes it easier to identify potential hazards to food safety caused by baits or traps, and guarantees that these can be found quickly if required.

Third bullet point:

• identification of the baits on site

Interpretation

Traps, baits and insect exterminators must be identifiable and assignable to the bait map.

Fourth bullet point:

- responsibilities, in-house / external,

Interpretation

The food business operator generally has the overall responsibility for food safety and for complying with customer specifications. Within this scope he can outsource tasks to a service provider. However, he remains responsible for selecting suitable services providers. The following breakdown contains a logical distribution of tasks between the food business operator (client) and the service provider as a specialist company (contractor), which is also illustrated in the chart (circular chart shown above).

In-house (client)

- Define and implement processes and procedures to prevent pest ingress and infestation (e.g. industrial hygiene, operating procedures for flows of goods ...)
- Ensure suitable structural preventive measures against pests (e.g. state of doors and gates, drainage system, installations, fly screens ...)
- Train relevant employees to use an in-house control system for pest control (e.g. preventive measures and reporting system)
- Document any evidence of pest activity and initiate appropriate measures
- Raise awareness among all employees about pests
- Check recommendations given by the pest control technician and implement measures where required

External (contractor) or in-house pest control technician

- Identify risks in connection with pests
- Recommend preventive measures and maintain active dialogue with client
- Set up monitoring system (see glossary), monitor and carry out regular visual inspections
- Carry out professional pest control this means not only to check the traps / baits but to assess the complete situation within the company and document e.g. cleaning deficiencies which may attract pests
- Document all measures

See also flow chart DIN EN 16636 chapter 2.

See also contract and arrangements regarding legal obligations and information requirements (chapter 10).

Fifth bullet point:

- **used products / agents and their instructions for use and safety**

Interpretation

Compliance with instructions for use, based on the safety data sheet and the instruction manual. The regular reviews of the safety data sheets (e.g. at least every two years), which ensure they are complete and up to date, must be clearly documented.

In case of working with benefitors like ichneumon wasps or others gauge the immense positive effect against the tiny weight and size of those creatures.

Sixth bullet point:

- **the frequency of inspections**

Interpretation

Inspection intervals are the maximum time between two visits of examining Monitors and / or visual site inspections. When defining those, life cycle of potential pests and their possible adaptation (e.g. add. generations, lack of diapuse etc.) have to be regarded.

Additional sentence:

The pest control system shall be based on a hazard analysis and assessment of associated risks.

Interpretation

See chapter on hazard analysis.

4.13.2 (1th sentence)

The company shall have qualified and trained in-house staff and / or employ the services of a qualified external provider.

Interpretation

Qualified staff can identify the pests to be expected and can apply appropriate measures. All relevant national provisions must be complied with. Even if pest control is outsourced to an external service provider in-house staff must be trained at least so far that they know which pest could occur, how they and their marks do look like, where they could be expected and so on.

See also qualification matrix in capture 9 and the requirements of DIN EN 16636.

4.13.2 (2nd sentence)

Where an external provider is used, the activities required on site shall be specified in a written contract.

Interpretation

The qualified staff must be readily accessible; suitable cover must be arranged as required (in-house or external).

See also chapter 10 contract management.

4.13.3 (1th sentence)

Pest control inspections and resulting actions shall be documented.

Interpretation

The measures must be documented in such a way that they are clear, readily accessible and can be archived. Any special rules or legal requirements regarding the documentation or archiving period must be complied with.

Prior to implementing the measures, all responsibilities must be clearly defined.

Depending on the structure of the companies, escalation steps must be defined in advance.

Critical limits for infestation and corrective measurements should be defined further on, every assessment and recommendation of the service provider should be documented even if no measurements will be implemented by naming the reason for this.

Minimum requirements:

- location
- procedure, measure
- status
- date/ time
- person performing the task
- When using pest control products: target organism, application method, product name, quantity applied, active ingredient, concentration

The documentation may be prepared on paper or electronically.

4.13.3 (2nd sentence)

Implementation of actions shall be monitored and recorded.

Interpretation

The following must be documented (has been recorded):

- Deadlines for measures
- Result
- Further necessary measures

4.13.4

Baits, traps and insect exterminators shall be functioning, shall be in sufficient numbers and shall be placed in an appropriate position. They shall be constructed and positioned as not to cause any contamination risk.

Interpretation

A sufficient number, according to professional pest control measures, means that the occurrence of pests will be identified early and / or any existing pests will be caught quickly and safely. The required quantity depends on the type of pest and building structure (e.g. wall edges, openings or points of pest ingress) or the effectiveness of lures (e.g. UV light, pheromone coverage) and / or the radius in which the monitored or controlled pests are active.

If the baits, traps or insect exterminators pose a contamination risk (e.g. pesticide ingredients, allergens, foreign matter, pests, parts of pests or pest excrements), these must be designed, set or placed in such a way that any risk of contamination is practically excluded (e.g. use fixed baits, avoid placing devices directly over areas in which open food is handled, use collecting trays and double chamber systems, glass breakage protection).

Electric fly killers / booby traps shouldn't be used because of several reasons:

- possible contamination of product by pieces of insects catapulted outside in a radius up to five meters
- also keep in mind possible contamination of personal or other material flow below
- counting and of course determination is not possible for root cause analysis by service provider

If this is not possible, the use of the above must be described in a hazard analysis and appropriate measures must be taken (e.g. detectable traps, blue plastic baits)

4.13.5

Incoming deliveries shall be checked on arrival for the presence of pests. Any infestation shall be documented and control measures taken.

Interpretation

Hazard/risk-oriented inspections, taking into account additional information (e.g. type and specification of raw materials, complaints statistics), and using appropriate procedures (e.g. visual inspection, acoustic inspection, quarantine of incoming goods if required).

See also preventive measures above and chapter on prevention.

4.13.6

The effectiveness of the pest control shall be monitored with the help of regular trend analyses.

Interpretation

Medium and long-term pest development can be monitored using records of previous inspections and other documentation. The aim of the trend analysis is

- to prevent the occurrence and severity of infestation in the medium and long term by analysing the monitoring results and incidences of infestation on a regular basis,
- and/or to reduce the duration of control measures necessary for eradication,
- or to keep the occurrence of pests at a non-critical level.

6 Further requirements of IFS Food Version 6 for pest monitoring / control – explanation and interpretation

6.1 Further requirements of IFS Food Version 6 for pest monitoring and pest control, besides chapter 4.13, with direct and explicit reference to the topic of pests, prevention and control

The following IFS 6 requirements should also be taken into account, particularly in connection with pest control, as this term is mentioned or referred to indirectly in some parts of the document.

As a general rule, these requirements are already monitored and implemented in other contexts. Therefore, no further interpretation is given at this point. Please find below an overview of the requirements as a reminder.

4.9.3.2 The hygienic disposal of waste water shall be ensured. Drainage systems shall be easy to clean and designed to minimise the risk of product contamination (e.g. ingress of pests, etc.).

Disposal of waste water and cleaning of the drainage has to occur in intervals shorter than the life cycle of expected pests.

4.9.4.2 Where false ceilings are used, access to the void shall be provided in order to facilitate cleaning, maintenance and inspections for pest control.

It is not enough to assess the non-presence of pests once but a continuous monitoring should be implemented as very small slots or even a rough frontage could be enough to enable infestation with pests.

Every part within the production site or storage area which are not under frequently control could pose a risk for pest infestation as you might notice it when they implemented themselves finally only.

4.9.5.3 Where windows and roof glazing are designed to be opened for ventilation purposes, they shall be fitted with easily removable, good-condition pest screens or other measures to avoid any contamination.

4.9.6.2 External doors and gates shall be constructed to prevent the ingress of pests; if possible, they shall be self-closing.

4.11.5 Waste collection rooms and containers (incl. compactors) shall be designed to be kept clean to minimise pest attraction.

4.15.1 Before loading transport vehicles, their condition (e.g. absence of strange smells, high dust load, adverse humidity, pests, mould) shall be checked and action taken, if necessary.

7 Hazard analysis and risk assessment

A hazard analysis including an appropriate risk assessment must be carried out as part of the pest control scheme. This is aimed at eliminating any hazards to food safety and any risks to product quality, which could stem from the presence of pests along the food chain (the term 'hazard analysis' in connection with pests must be interpreted more broadly than the general IFS definition).

The methodological approach, however, corresponds to the general principles of hazard analysis.

Hazard analyses carried out according to the HACCP system are generally process-related. However, risks posed by pests are often indirect, e.g. through bacterial spread or revulsion. This leads to a thorough consideration of the environment, especially since an infestation can generally only be described spatially. The result is a site-specific (spatial) assessment of the risk caused by a potential infestation, even though the process relating to food safety must be considered in parallel. The standard systems such as pest monitoring cover this situation.

To ensure that pest monitoring most effectively eliminates any risks posed by infestations, a regular review and reassessment of the monitoring measures is required, taking into account the following:

- monitoring cycle
- type of monitored pests
- type and location of monitors and baits used
- protective measures and preventive measures (e.g. door brush, fitting collars where pipes pass through walls, insect exterminators, specifications and inspection of incoming goods, staff training)

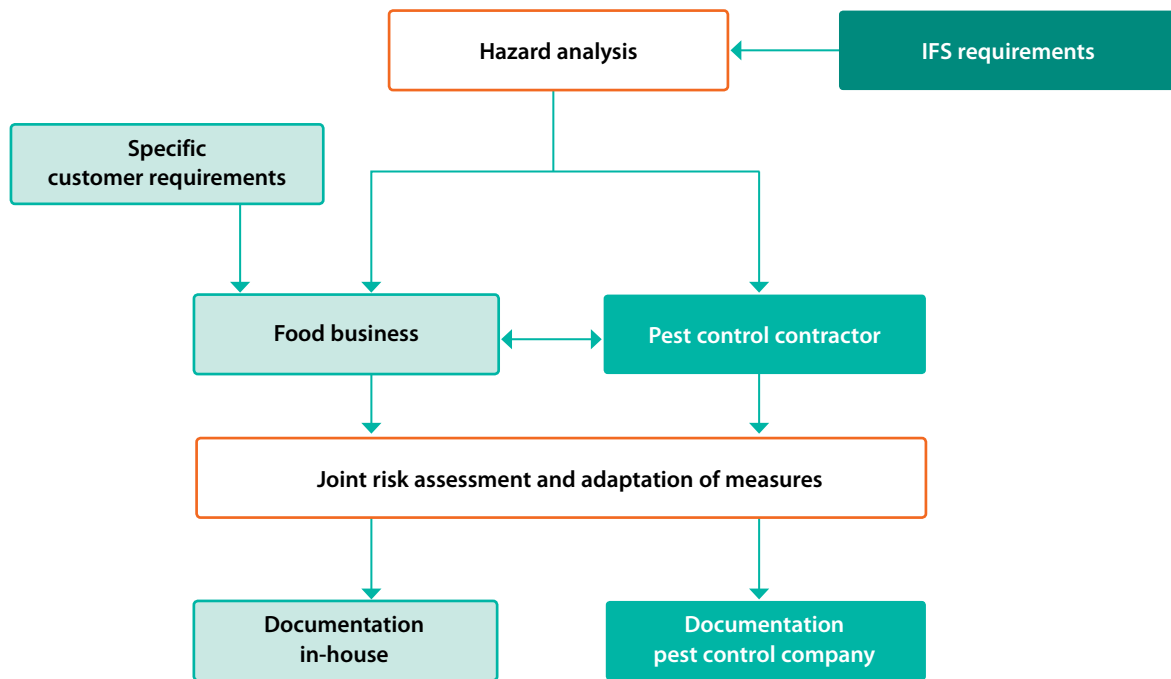
See also annex for table 'Risk-oriented pest control system'.

To assess their effectiveness, the available sources must be regularly evaluated and taken into account (e.g. trend analyses, complaints statistics, inspections of incoming goods, raw material origin and kind of raw material, intermediate storage, outsourced processes). Based on this information, the required measures are taken as part of the continuous improvement process.

The tasks and responsibilities for conducting and preparing the hazard analysis and assessment must be clearly defined between client and contractor. The following overview shows an example of this cooperation.

See also chart: Cooperation for hazard analysis.

Figure 3:
Cooperation for hazard analysis



IMPORTANT NOTE:

both the company and the service provider need to perform a risk assessment in advance to decide which actions are necessary there (which pest should be addressed, what kind of baits, frequency of checks, responsible staff, etc.).

Source: own illustration based of Quant

8 | Prevention



8 Prevention

The term prevention in connection with pest control refers to all measures taken to exclude and ward off pests, to create unfavourable conditions for pests to harbour and breed, and to facilitate their identification (DIN 10523:2005-07).

Which of these measures must be implemented depends on the individual case and is based on the risk assessment, the pest control plan and the hazard analysis (DIN EN 16636:2015-05 pp.13 et seq.).

Prevention is the duty of both contracting parties; any measures must be harmonised and should be coordinated. The parties (client and contractor) must inform each other in an appropriate way of any abnormalities identified during the pest monitoring / visual inspection and provide evidence that these have been dealt with.

8.1 General sanitation

The most important measure for preventing pest infestation is maintaining general order and cleanliness. Preventive measures are aimed at depriving potential pests of food and leaving them no places to harbour. These include correct storage, regular waste disposal and hygienic handling of food.

Think of facts like e.g.

- a mouse could get into your production site through a gap as small as the diameter of a pencil
- a mouse could climb up walls with rough facade without any difficulties
- mice and rats could survive also in cold storage rooms within the insulation
- a rat could build their corridors even if there is a little layer with split, it needs at least 30 – 50 mm of big pebbles
- a rat might not accept the baits as they have been learned to eat other things
- birds could nestle on small edges even those with birds spikes
- all pest control against insects is affected in high amount of the temperature
- sometimes you find creatures in your production site which are no direct pests but which show you that there is a problem of either structural kind or hygienic issue (e.g. humidity, mould) at your site – pointer organisms.

And maybe most important any pest control measures can't be sufficient or sustainable if there is no support of you, the company.

8.2 Organisational measures

The following contains a non-exhaustive list of bullet points, which must be taken into account by the client when implementing organisational measures:

- Remove food sources e.g. under or in cupboards / lockers, cable raceways, etc.
- Prepare organisational solutions (e.g. length of time goods at risk are stored in external areas)
- Inspect incoming goods for potential infestation
- Organise appropriate, hygienic disposal management
- Building design including alterations, extensions or redevelopments; select appropriate materials
- Provide input into landscaping of company grounds (e.g. ground cover, pond, distance from building etc.)
- Carry out regular visual inspections, including relevant documentation e.g. during plant inspections
- Provide training and raise awareness among staff; identify infestations in the company; implement reporting chain, escalation procedure within the company, company-specific measures

As a rule, the above-mentioned measures must be implemented by the client; the pest control contractor will provide advice and support.

The contractor will ensure 'appropriate' pest monitoring within the overall context.

8.3 Structural proofing of the premises

Structural proofing can be divided into external and internal proofing. Depending on the circumstances, the surroundings may also require special attention. The following is a non-exhaustive list.

8.3.1. External proofing

Possible technical measures:

- Proof windows by installing fly screens to control ingress of flying insects
- Proof door gaps e.g. by installing under-door brushes to keep out rodents and crawling insects
- Proof factory gates e.g. by installing slat doors to control ingress of flying insects and birds
- Proof entrance areas e.g. by installing an air lock to control pest ingress
- Proof the entire premises or individual spaces e.g. through internal positive pressure to control ingress of flying insects and e.g. mealworm beetle, detection traps for the presence of pests (e.g. beetles)
- Technical solution to control bird ingress
- Prevent possibilities of colonisation
- Proof piping and ducting
- Proof drainage points
- Proof cable feedthroughs

8.3.1.2 Internal proofing

The internal proofing of premises against the spreading of harmful organisms is largely based on the same measures as those recommended for external proofing. In addition:

- Non-toxic lures or traps for prevention – other pest control measures may only be used by a professional pest control technician following a site-specific hazard analysis
- Sticky monitor traps for insects
- Pheromone traps
- UV traps
- Fly screens

9 Training and qualification requirements

The training and qualification requirements for pest control technicians and corresponding activity limitations are generally defined by national specifications. The qualifications must be appropriate for the activities carried out. Evidence of this can be provided through proof of qualification for in-house staff or through necessary confirmation from a pest control contractor (e.g. specifications, certificates or separate confirmation).

The table shows the required proof of qualifications for pest control technicians dealing with rodent exterminators, insect exterminators and fumigants for Germany.

Qualifications for other EU countries and / or the international domain must be checked separately. A chart such as the one contained in table 2 is recommended.

Table 2:
Qualification matrix pest control'

Qualification	Rodent control biocide (plus designation, permission from vet)	Rodent control plant protection (= agricultural production, mills etc.)	Insect control (no T+, T or Xn)	Insect control no restriction	Fumigation (container, bagged goods, building, etc.)
Pest control technician (Since 2004: dual vocational training before 2004: vocational retraining),	+	+	+	+	-
GDR journeyman or master	+	- ●●	+	+	-
Expertise according to TRGS 523 (health and storage protection)	+	-	+	+	-
Expertise in killing vertebrates (Section 4 Animal Welfare Law)	+	-	+ ●●●	-	-
Expertise in plant health (proof via plant protection card)*	-	+	-	+	-
Expertise according to TRGS 512	-	-	-	-	+ ●●●

* from 2016 at the latest ●● certificate of expertise in plant protection ●●● no training
+ is trained in the respective training

10 Contract management (pursuant to 4.13.2)

The food business operator must deal with issues relating to pest monitoring and pest control or appoint an external pest control company for this task (see 4.13.2).

The terms for appointing an external company according to IFS must be set out in a contract. This must be drawn up in writing, informally, to ensure transparency and define the scope of services. A contract should not only contain a precise list of the contracting parties' obligations but, additionally, (also) set out the cooperation of the parties as well as the processes and procedures and their documentation.

It must contain, for example: the services to be performed by the client and contractor, rules regarding information exchange, obligations of each party to cooperate, conduct within the company as well as clear instructions in case of emergency (contactability, response times etc.).

The contract should be worded such that any subsequent questions and uncertainty regarding pest control and monitoring in general can be answered.

Depending on the scope of the points to be addressed and to make it easier to amend the contract, the use of annexes is often recommended. Please note that the main text of the contract must clearly refer to the annex(es). The annexes can contain more specific points, for example specifications and the corresponding terms and conditions or an overview of the sites covered by the contract, etc.

The following overview contains a list of points that should be addressed in a contract. The **points in bold** are a high priority for the client. It is always recommended to specify these in writing.

Table 3:
Contract management

Points to be addressed in a contract	Explanation - what is the aim of this point in the contract?	Reason for the provision in the contract.
Parties	Who concludes the contract with whom?	Clarify who is involved
Preamble	Aims of pest monitoring and control	Indicate cooperation between pest control contractor and food business
Legal safeguards	“Compliance with applicable law”	Cover all further points which cannot be mentioned here
Site-specific, pest-specific and product-specific hazard analysis	Method, frequency and scope (space, location etc.) of hazard analysis including expected pests, site conditions (surroundings) and resistance of handled products	Ensure achievement of goals and comprehensive proofing of all sites
Specifications and terms	Services to be provided by contractor and client, provisions regarding information exchange including documentation, obligations of each party to cooperate (services which can only be fulfilled if several contracting parties are involved, e.g.: access to rooms or interruption of production), instructions for emergencies (contactability, response times etc.). Special instructions on how services must be performed (e.g. customer specification). Ensure that technicians of your service providers fulfill the requested legal requirements regarding education and continuous further training.	Clear delegation, division of responsibilities and compliance with customer requirements
Contract term and notice periods	Period for fulfilling contractual obligations	Legal safeguards and clarity
Confidentiality	Granting of access to the premises or parts of it, viewing of and access to documents, transfer of and dealing with company-specific documents and findings	Confidentiality vis-a-vis the food business and the customer relationship between client and contractor.
Key figures and performance data	Specify relevant key figures and performance data for the food business and its in-house monitoring system (statistics incl. trend analysis) and the way in which this data is provided	Ensure that the agreed service has been provided and that the initiated measures are appropriate.
Liability	Insurance cover (e.g. public liability insurance), liability for non-fulfilment of agreed service	Sufficient protection against entrepreneurial risks

11 Service provider assessment

The IFS Food Standard calls for a general service provider assessment. This includes any pest control measures if these are provided as an external service. The Standard does not describe any special methods for the assessment of pest control technicians (see also 4.4 purchasing requirements IFS Food 6).

Requirements for external pest control technicians:

Any external pest control is based on a comprehensive inspection of the site and its surroundings as well as on a root cause and hazard analysis. Taking into account the legal framework, these analyses form the basis for the pest control plan and the written offer, which also describes the hazards, safety measures and obligations of the client.

Once the order has been placed, the pest control plan must be implemented and documented in a report for the client. In addition, the client must be given confirmation regarding the effectiveness of the service, and provided with all records of the means used and their application site.

To support the service provider assessment, the following standards are available in the market:

DIN EN ISO 9001
DIN 10523
DIN EN ISO 16636
DIN EN ISO 22000

Compliance with the standard can be verified through independent review. This is currently the case for DIN EN ISO 9001, DIN EN ISO 16636 and DIN EN ISO 22000

12 Pest control in other IFS Standards

Users of other standards in the IFS series can also refer to these pest control guidelines. This applies, in particular, to users of the IFS Logistics Standard, as the requirements of the two standards in terms of pest control are almost identical.

The procedures of these guidelines can also be applied to the other standards of the IFS family.

13 Annex

Risk-oriented pest monitoring system:

To be considered when preparing a pest monitoring program	depending on
Monitoring cycles	attractiveness and effectiveness of baits and traps sensitivity of the area (e.g. open and sensitive food) seasonal risk of pest ingress (e.g. outside temperatures)
Type of monitored pests	type of food (e.g. animal or vegetable food) surroundings (e.g. railway embankment and bodies of water)
Type and location of monitors and baits used	e.g. mechanical load, moisture protection, building edges, pipe feedthroughs, expansion joints, hot-water pipes, duct connections, power cords and dead space, heat-generating devices
Protective measures and preventive measures	e.g. refrigerated areas, fly screens, air locks, covers and packaging

Glossary

Bait	A lure used to attract certain animals (e.g. mouse trap, pheromones).
Bait map	As defined in "Food und Hygiene Praxis" (Food and hygiene practice): current site map including <ul style="list-style-type: none">• trapping points (flies, insects, rodents),• identification of baits (e.g. the BRC requires a numbered list),• details on active ingredients used as well as safety data sheet,• signed including name and date of the person responsible for pest control• within the company, who also regularly checks changes such as new storage areas or access points against the map.
Bait station	The location at which a bait or trap has been positioned or permanently installed.
Hazard	according to Regulation (EC) No. 178 / 2002 a biological, chemical or physical agent in, or condition of, food or feed with the potential to cause an adverse health effect.
Hazard analysis	according to IFS Food 6: The process of collecting and evaluating information on hazards and conditions leading to their presence to decide which are significant for food safety and therefore should be addressed in the HACCP plan.
Infestation analysis	according to DIN EN ISO 16636 In accordance with the flow chart for professional pest control in DIN 16636, an infestation analysis is a site-specific assessment containing the following points: assessment of the presence of pests, pest identification, root cause analysis, and risk assessment for the client and for the site.
Insect exterminator	All systems used to attract and trap insects (e.g.: sticky traps, electrical devices).
Monitoring	Continuous, appropriate methods adapted to the business, which serve to detect the presence of pests and any incidence of infestation by inspecting monitors and conducting additional visual inspections.
Pest	according to DIN EN ISO 16636 An organism that is harmful to humans, human activities, material assets or products used or manufactured by humans.

Pest control	<p>according to DIN 10523</p> <p>All measures used to avoid adverse effects on food caused by pests. This includes an appropriate concept. Pest control within the meaning of this standard covers prevention, infestation identification, control and documentation.</p> <ul style="list-style-type: none"> • Prevention includes appropriate measures to exclude or ward off pests, to create unfavourable conditions for pests to harbour and breed, or to facilitate their identification of infestation. • Infestation identification serves to identify possible infested sites, spread of infestation, level of infestation and, where applicable, type of infestation, or confirmation that “no infestation” has occurred. Checking incoming goods for pests is also part of infestation identification. • Pest control includes all appropriate measures to reduce the spread and proliferation of pests at a site and /or to eradicate an infestation. • Documentation consists of confirmation of implementation (responsibility, book-keeping), information on means and measures (content) and, where applicable, localised infestation findings (statistics, control monitoring). The documentation does not have to be prepared in a specific format (e.g. paper, electronic, symbolic ...)
Pest control products	Formulations consisting of active ingredients which are based on chemical, physical or biological modes of action and kill, repel or deter pests.
Pest monitoring	Synonymous with monitoring according to DIN 10523
Qualification	as defined in ‘Gablers Wirtschaftslexikon’ (business dictionary): Individual work capacity, i.e. all subjective / individual skills, knowledge and behavioural patterns which enable a person to fulfil the requirements of certain work-related functions in the long term (Baethge).
Risk analysis	according to Regulation (EC) 178 / 2002 ‘Risk analysis’ means a process consisting of three interconnected components: risk assessment, risk management and risk communication
System	according to IFS Food 6 A set of interrelated or interacting elements. A system is a planned, sustainable structured course of action. Depending on its complexity, documentation is recommended. A system includes: documentation, procedure description, control / monitoring, corrective action, site plan.
Trend analysis	as defined in “Pest control in the food industry”: Medium and long-term pest development can be monitored using records of previous inspections and other documentation.



Sources

ISO 16636:2015

IFS FOOD 6, as at: 2014

Food und Hygiene Praxis (Food and Hygiene Practice)

Gablers Wirtschaftslexikon (German economics and business encyclopaedia)

Schädlingskontrolle in der Lebensmittelindustrie (pest control in the food industry)

Imprint

IFS Management GmbH
Am Weidendamm 1A
10117 Berlin
Germany

Phone: +49 30 726 250 74
Telefax: +49 30 726 250 79
E-mail: info@ifs-certification.com
www.ifs-certification.com

